

# Tabbs Bay

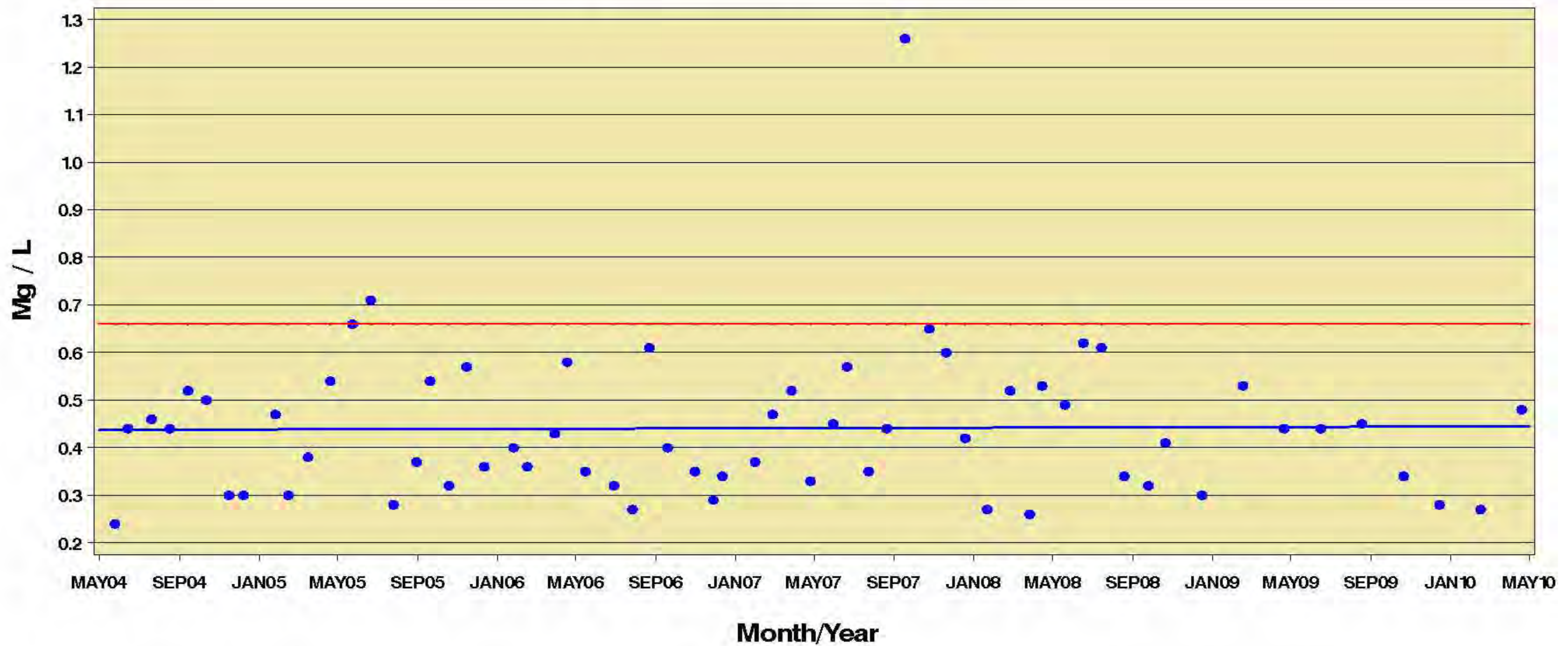
Station: 17927

Segment: 2426

Parameter: Total Phosphorus

Assessment Unit: 2426C\_01

2010 Nutrient Screening Level: 0.66 Mg / L



Trends are considered significant if the p-value is < 0.10

Regression p-value= 0.9120

R-Square= 0.0002

T-Value= 0.1110

Number of Samples= 63

Red line indicates the applicable 2010 Nutrient Screening Level