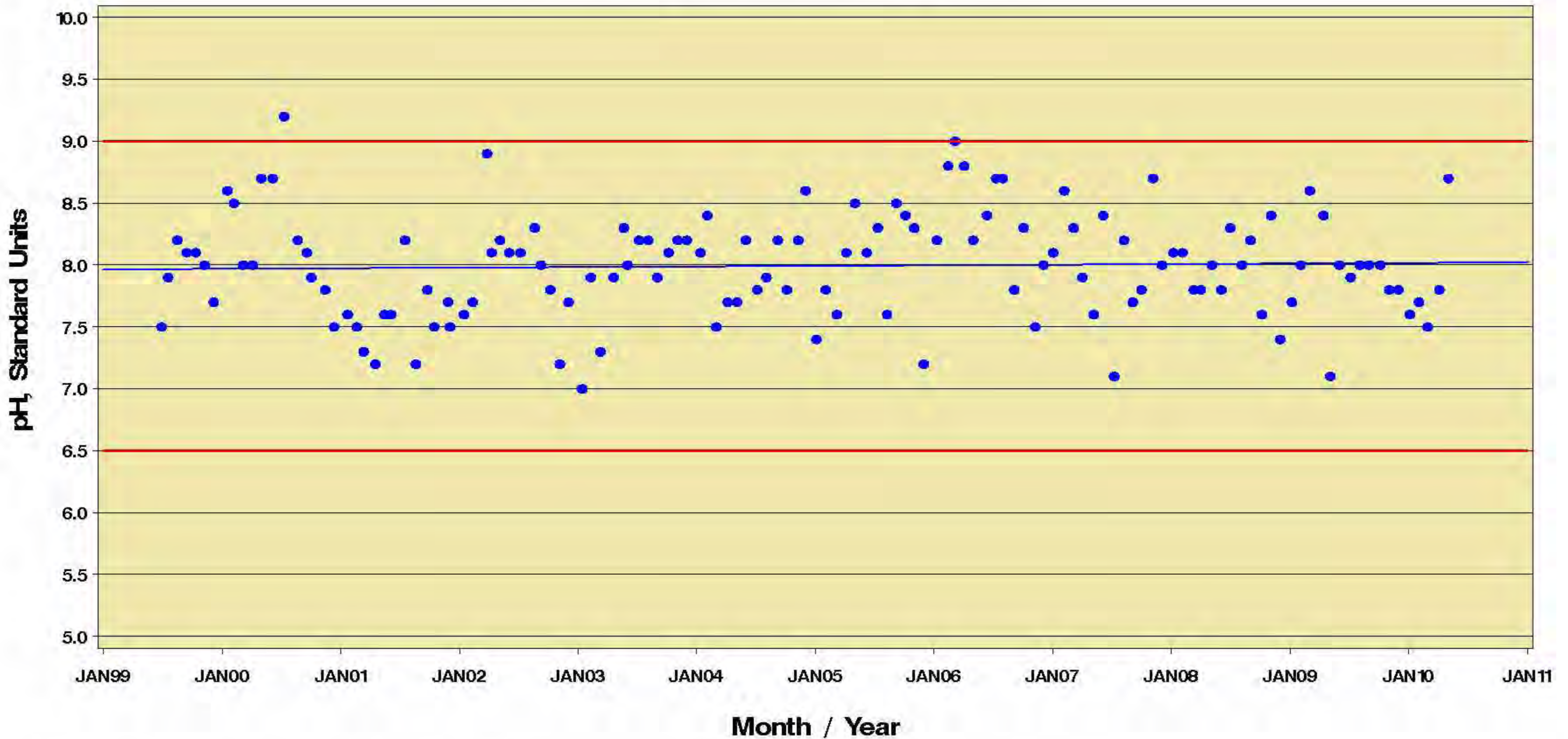


San Jacinto River Tidal

Station: 16622 Segment: 1001 Parameter: pH
Assessment Unit: 1001_02
2010 Water Quality Standard: 6.5 – 9.0 Standard Units



Trends are considered significant if the p-value is < 0.10

Trend is significant at $p = 0.6642$ R-Square = 0.0015 T-Value = 0.4350 Number of samples: 132

The blue regression line applies to the plot of actual values ; regression statistics are derived from regression of log-transformed data

Red lines indicate the 2010 Water Quality Standard